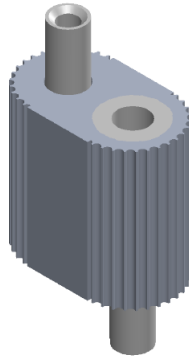


ALUMINUM LOOP GRIPPERS (SPECIFICATIONS, FEATURES & ADVANTAGES)

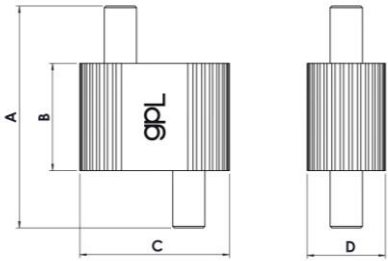


OVERVIEW

The GPL Loop Gripper is a fast and easy way to form loops with cable to suspend HVAC, MEP, Light & Heavy fixtures vertically or at slight angles. It is the perfect alternative to traditional methods such as threaded rod because it reduces installation time's approx.50%.

- Description: -Aluminum Loop Gripper
- Model: - GPCB – 436/437/438/439
- Temperature rating: -up to 300° F
- Recommended wire with safe working load: -
 - 1.5mm – 30kg (GPCB-436)
 - 2.0mm – 56kg (GPCB-437)
 - 2.4mm – 70kg (GPCB-437)
 - 3.2mm – 113kg (GPCB-438)
 - 5.0mm – 300kg (GPCB-439)
- Safety factor: - 5:1 ratio
- Features: - Safe, Durable, Quick & easy to install.
- Origin: - India

PRODUCT DETAILS

PICTURE	ITEM	WIRE SIZE	A	B	C	D
	GPCB-436	1.5mm	29mm	16mm	17mm	10mm
	GPCB-437	2.0mm	36mm	18mm	23mm	12mm
	GPCB-438	3.2mm	49mm	25mm	30mm	16mm
	GPCB-439	5.0mm	68mm	33mm	46mm	24mm

FEATURES

- Housing: - Special Grade extruded Aluminium. This alloy provides high strength and consistent manufacturing quality.
- Plunger: - Special Grade Brass tapered part along with metal balls carried for wire gripping, which fits inside the tapered profile of housing.
- Balls: - Critical gripper component, which acts as a locking mechanism for wire and does not let the wire slip under tension. Ball gripping system is the superior cable gripping system.
- Spring: - Compression spring, which helps the plunger movement by applying force on plunger to grip and it push back automatically after releasing the load.
- Stopper: - Holds the Spring & Plunger inside the housing.




CABLE DETAIL AND BREAKING STRENGTH

CABLE DIAMETER	TOLERANCE	CONSTRUCTION	MATERIAL	BREAKING STRENGTH
1.5mm/1-16inch	+ 0.1 / -0.1mm	7x7	Galvanized Steel	150kg/330lbs
2.0mm/5-64inch	+ 0.1 / -0.1mm	7x7	Galvanized Steel	280kg/616lbs
2.4mm/3-32inch	+ 0.2 / -0.1mm	7x7	Galvanized Steel	350kg/770lbs
3.2mm/1-8inch	+ 0.2 / -0.1mm	7x7	Galvanized Steel	565kg/1243lbs
5.0mm/3-16inch	+ 0.2 / -0.1mm	7x7	Galvanized Steel	1500kg/3300lbs

SAFE WORKING LOAD DURING DIFFERENT ANGLES

VERTICAL	AT 30°	AT 60°
100%	80%	60%

CABLE ASSEMBLY INSTRUCTION

	<p style="text-align: center;">1st step - PUSH PLUNGER DOWNSIDE THROUGH WIRE AND PASS WIRE THROUGH GRIPPER THEN MAKE WIRE LOOP THROUGH PIPE / DUCT.</p>
	<p style="text-align: center;">2nd step – REPEAT SAME PROCESS ON ANOTHER SIDE AND PASS WIRE THROUGH GRIPPER FOR FINAL LOOP CLOSING.</p> <p style="text-align: center;">Note: if need to re-adjust the placement, adjust the wire by pushing the plunger until done.</p>
	<p style="text-align: center;">ALWAYS CONFIRM ENGAGEMENT OF GRIPPER ON WIRE BEFORE APPLYING LOAD.</p> <p style="text-align: center;">(This is best accomplished by pushing the plunger in the opposite direction of the arrows on the cable lock and then pulling the cable also in the opposite direction of the arrows on the cable lock.)</p>

ALUMINUM HOUSING ADVANTAGES

- *Lightweight & strong structural material.*
- *Maintain strength at high temperatures.*
- *Most environmentally friendly and sustainable metal.*
- *Highly recyclable.*
- *Resistant to corrosion.*
- *Aluminium has the ability to “heal” itself over time even after the exterior of the component has corrosion. When component functionality is essential, aluminium is certain to withstand some of the toughest working environments.*

WARNINGS

- *DO NOT EXCEED THE SAFE WORKING LOAD OF THE PRODUCT.*
- *DO NOT USE A COVERED / INSULATED CABLE.*
- *DO NOT APPLY PAINT OR OTHER COATING.*
- *DO NOT APPLY LUBRICANT.*
- *THIS PRODUCT IS NOT RECOMMENDED FOR LIFTING LOADS.*
- *REMOVE DAMAGED CABLE END PRIOR TO INSERTING INTO THE GRIPPER*
- *DO NOT USE IN CHLORINATED ATMOSPHERES.*
- *RECOMMENDED FOR USE IN DRY LOCATIONS ONLY.*
- *RECOMMENDED FOR STATIC LOAD APPLICATIONS ONLY.*
- *MENTIONED LOADS ARE ACHIEVED AFTER USING A COMBINATION OF GPL WIRE ROPE & GPL GRIPPER.*
- *INSTALLATION MUST BE CARRIED OUT BY A QUALIFIED STRUCTURAL ENGINEER.*